

**Model ATH1G18
Antenna
1 GHz–18GHz**

The Model ATH1G18 is a wide band, high gain, microwave horn antenna that provides a minimum gain of 7dB over isotropic over the frequency range 1GHz to 18GHz. The Model ATH1G18 supplies the constant high intensity fields necessary for RFI/EMI field testing within and beyond the confines of a shielded room. The Model ATH1G18 is also designed to perform emissions measurements. The Model ATH1G18 is compact and light weight for ready mobility, yet is built tough enough for the extra demands of outdoor use and easily mounts on a tripod. The Model ATH1G18 provides the 1-18GHz response required for many often-used test specifications.

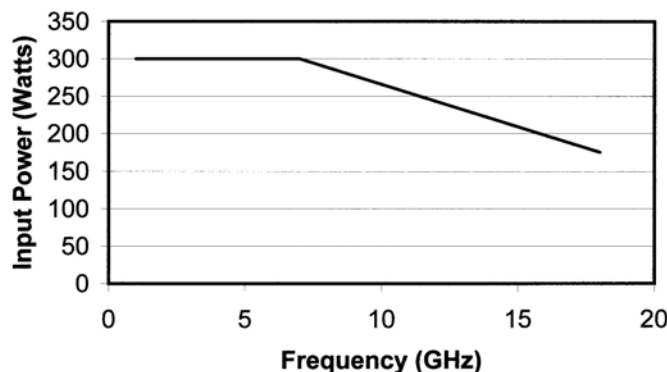
The ATH1G18 is supplied with Antenna Factor calibration data taken horizontally polarized at 1, 3, and 10 meters. Additionally, this antenna can be custom calibrated to the user's requirements. The calibrated model is designated by adding a 'CC' suffix to the model name. Calibration details must be provided using Form 701. Contact factory for details.

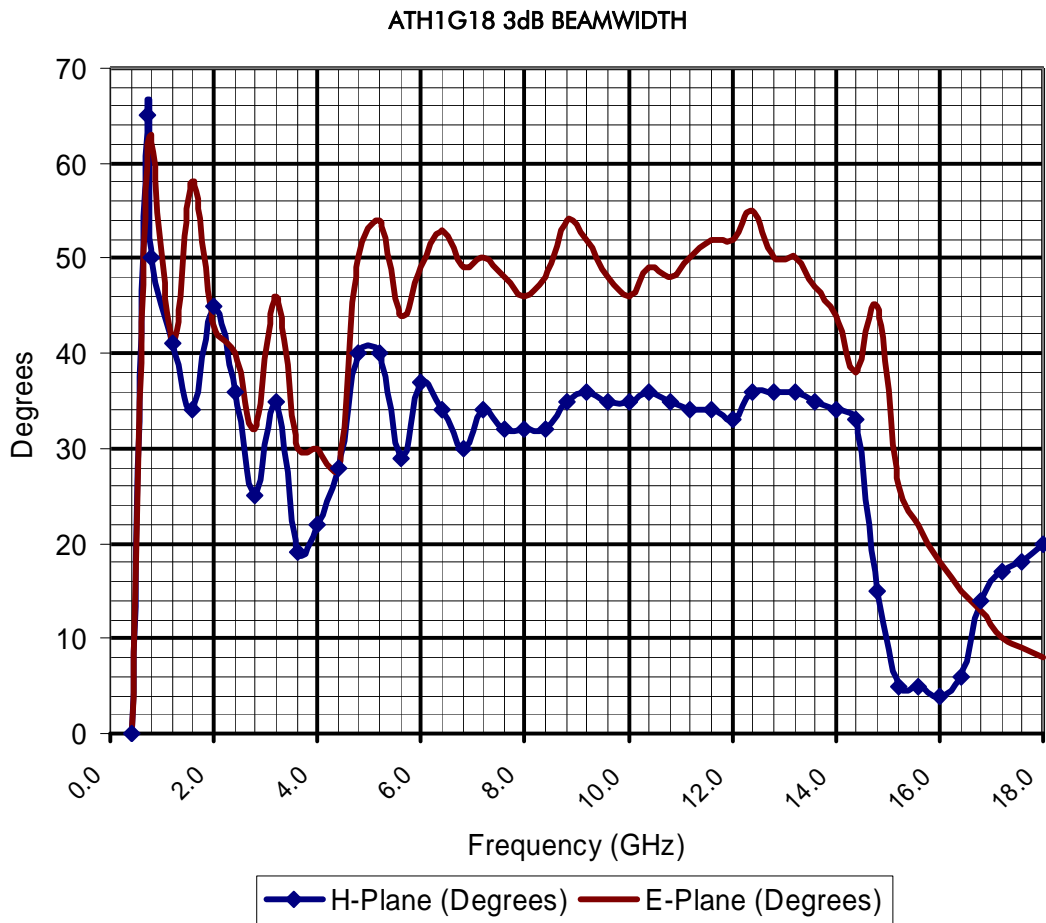
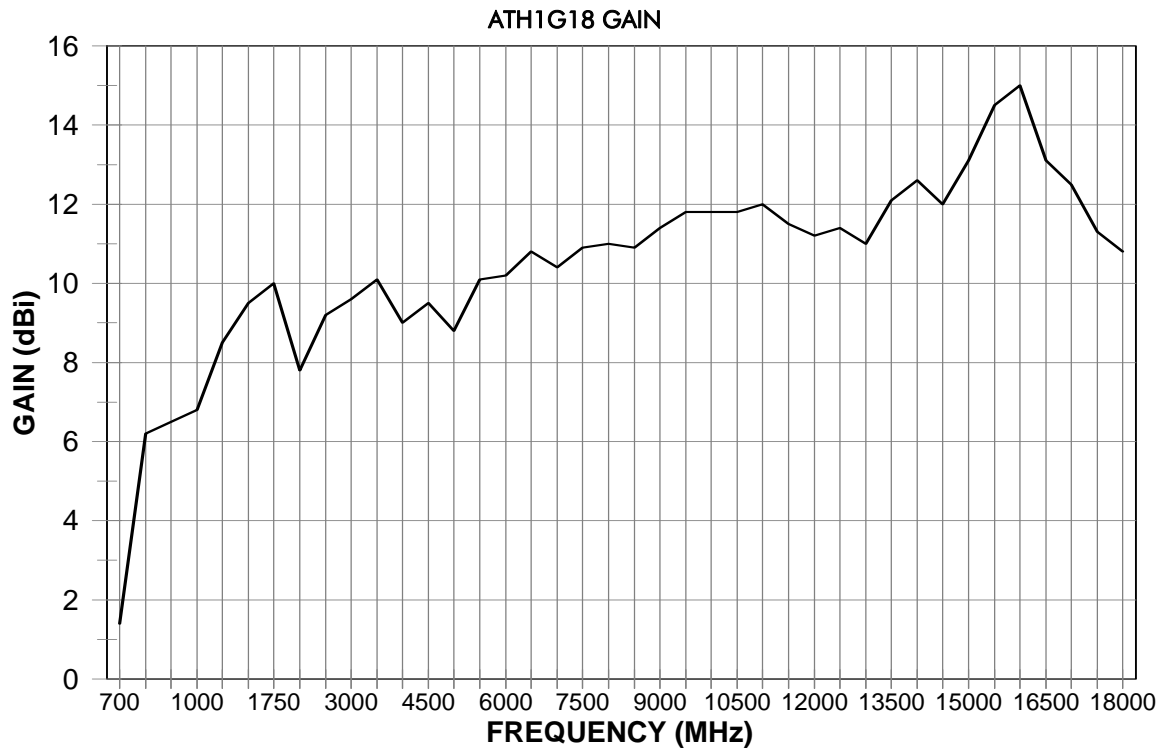
SPECIFICATIONS

FREQUENCY RANGE	1-18GHz
POWER INPUT (maximum)	300 Watts CW up to 7 GHz Above 7GHz, derate linearly to 175 watts at 18 GHz (See graph)
POWER GAIN (over isotropic)	See Curve
IMPEDANCE	50 ohms nominal
VSWR	
Typical.....	2:1
BEAM WIDTH (average)	
E Plane	See Curve
H Plane	See Curve
FRONT TO BACK RATIO (minimum)	20 dB
CONNECTOR	N(F) Precision
MOUNTING PROVISIONS.....	May be tripod mounted with or without tripod mount.
WEIGHT	1.57 kg (3.45 lbs)
SIZE (WxHxD).....	24.1 x 16 x 20.4 cm (9.48 x 6.29 x 8.03 in)

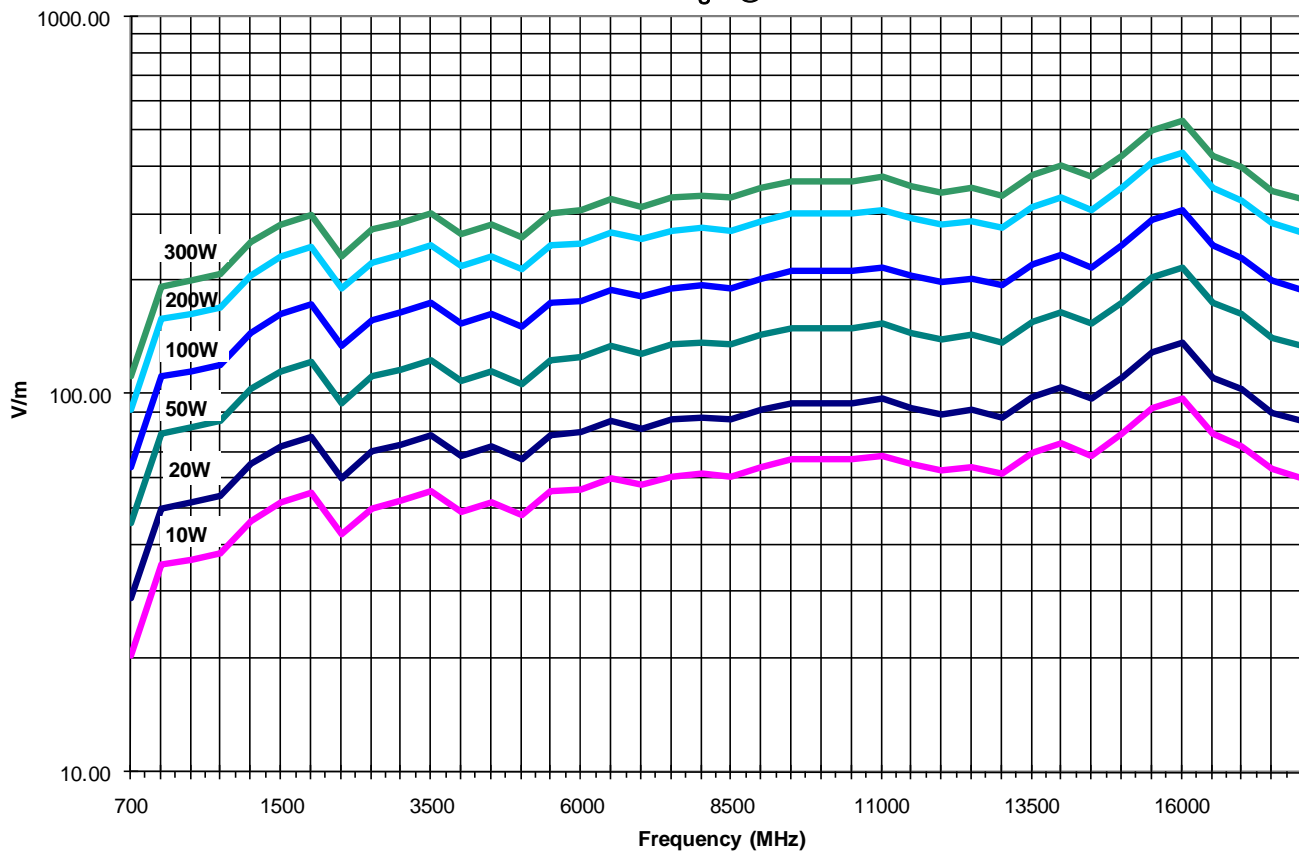


Input Power





ATH1G18 Field Strength @ 1 Meter



ATH1G18 Field Strength @ 3 Meter

